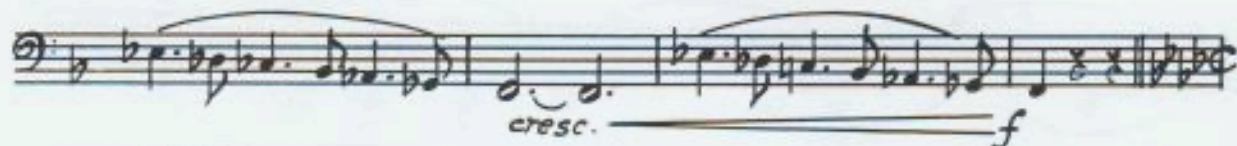
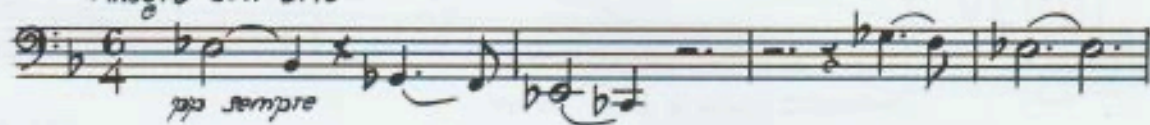


# Sinfonia n° 3 op.90

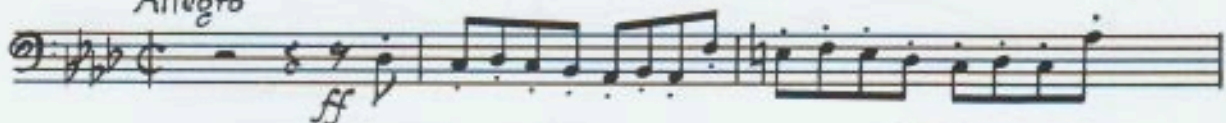
1883

G. BRAMHS

*Allegro con brio*



*Allegro*



# Sinfonia n° 9

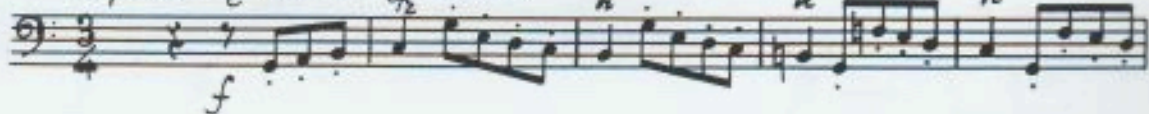
1908-10

G. MAHLER

Kalischt 1860

Vienna 1911

*Alquanto sgraziato e grossolano*



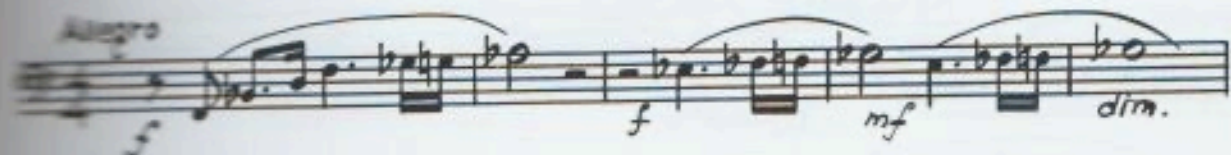
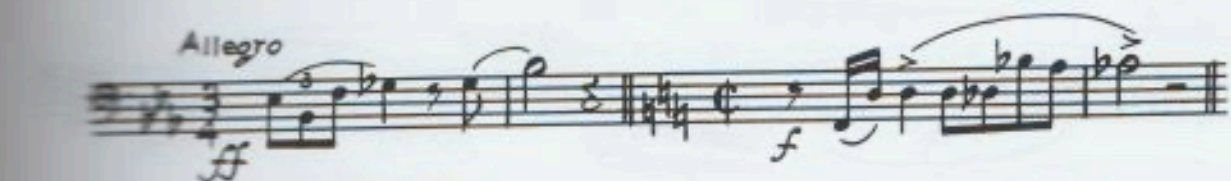


Vedi a pag. 218

C.Fag. Don Chisciotte  
di Strauss ecc.

Salomè  
1905

R. STRAUSS  
Monaco di Baviera 1864  
Garmisch 1949



Concerto per pianof. e orchestra  
per la mano sinistra-1931

M. RAVEL

Lento

Solo

1

*p*

*pp*

6

6

6